

The Baker School serves public school students from pre-k through 8th grade. It is an expansive school set on an undulating site comprised of a large, three-story WPA era wing built in 1938/1939 and a two-story wing built in 1951. It was cramped for space and need of a complete renovation.

The renovation added a new two-story library/cafeteria addition in the courtyard of the 1938/1939 wing adjacent to the Kindergarten wing and a one-story addition to the 1951 wing that has three classrooms and an auxiliary gymnasium for younger grades.

The entire building received complete mechanical, electrical, plumbing, fire protection and telecommunications upgrades. ADA improvements included upgrades to restrooms, adding of ramp systems and elevators, and modifications to stairs. Energy upgrades included replacing glass block with insulated windows throughout the 1951 wing.

Site improvements included upgrades to parking, a complete revamping of playfields and outside basketball courts, as well as new playground areas and structures.

Architect: PDR|P  
Andrew M. Brockway  
Project Manager & Project Architect

#### EDITH C. BAKER SCHOOL ADDITIONS AND RENOVATIONS

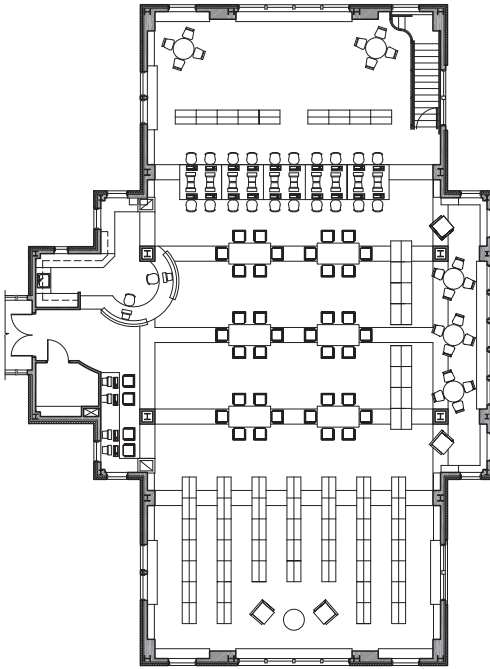
Brookline, MA

Size:

Renovation: 95,000 sf

Addition: 20,000 sf

Completed: 2000











*Auxiliary Gym for Younger Grades*

